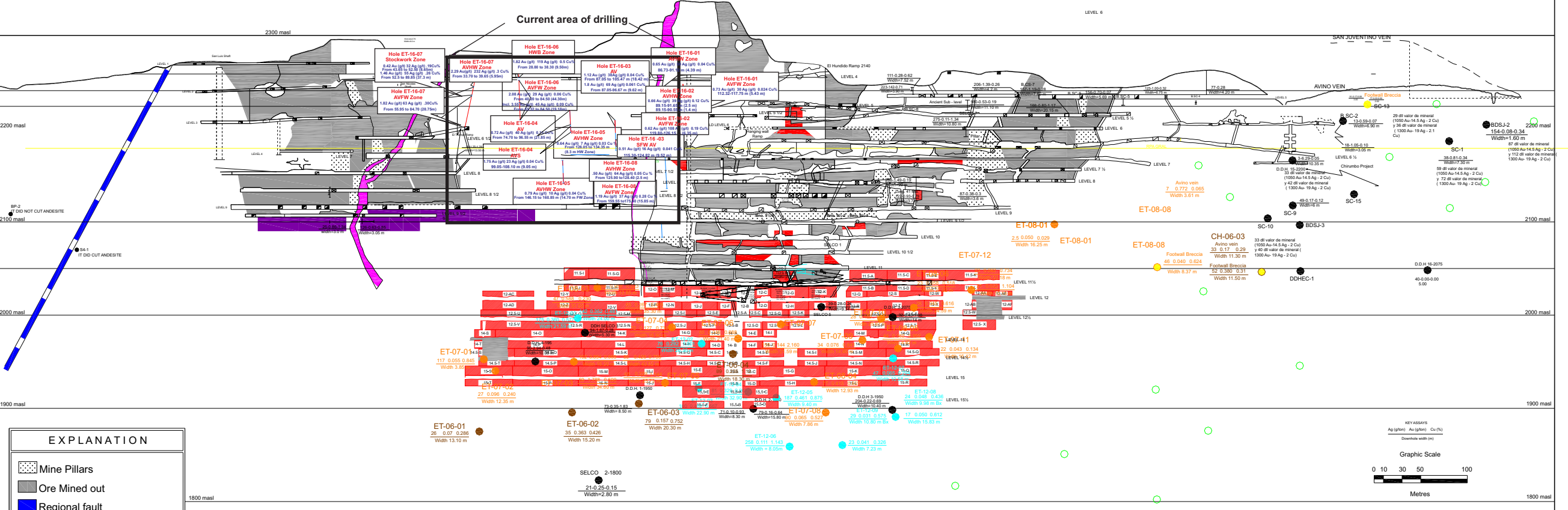




December 21, 2016
 Avino Silver & Gold Mines Announces Results From its Current Exploration Drill Program
 Between the San Luis Workings and Elena Tolosa Workings at the Avino Mine
 Long Section 2 - Avino Mine Area

SW

NE



EXPLANATION

- Mine Pillars
- Ore Mined out
- Regional fault
- Rhyolitic Dyke
- Diamond holes prior to 2006
- Diamond Holes in 2006
- Diamond Holes in 2007 - 8
- Diamond Holes in 2012
- Old Mine Pillars
- Diamond Drill hole Prog. 2016

AV = Avino Vein
FW = Footwall
S = Stockwork
HW = Hanging Wall
HWB = Hanging Wall Breccia

KEYSATS
 Au (g/t) Ag (g/t) Cu (%)
 Drillhole width (m)
 Graphic Scale
 0 10 30 50 100
 Metres

Cia. Minera Mexicana de Avino, S.A. de C.V.

Avino Project Date : November / 2016

LONG. SECTION LOOKING AT NW

Geology Department Scale 1:2000 m

Made By: Geology Dept. Checked By: Ing. Miguel Mendez. Approved By: Ing. Carlos Rodriguez. Digitalized By: Geology Dept.