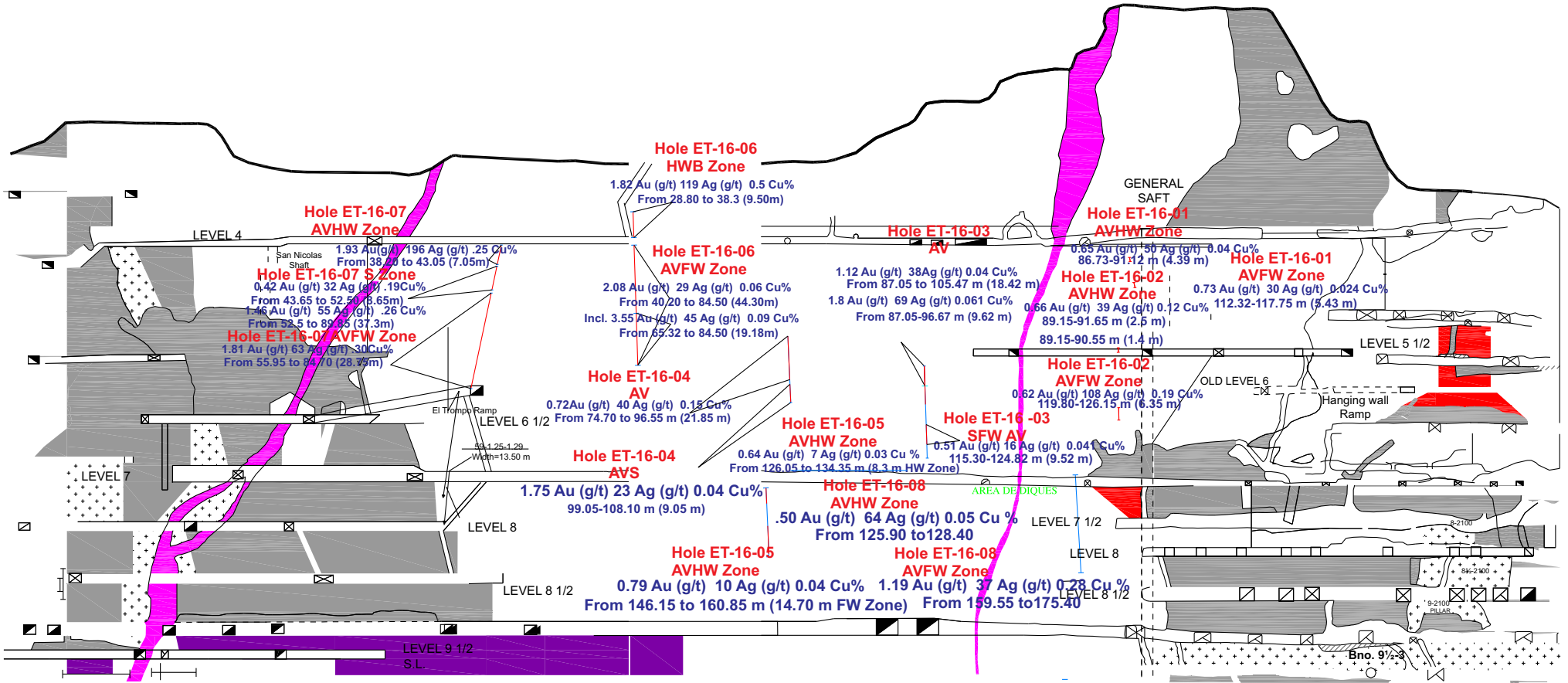




December 21, 2016

Avino Silver & Gold Mines Announces Results From its Current Exploration Drill Program
Between the San Luis and Elena Tolosa Workings at the Avino Mine
Long Section 1 - Area of Drilling including the first eight assayed drill holes



AV = Avino Vein
FW = Footwall
S = Stockwork
HW = Hanging Wall
HWB = Hanging Wall Breccia