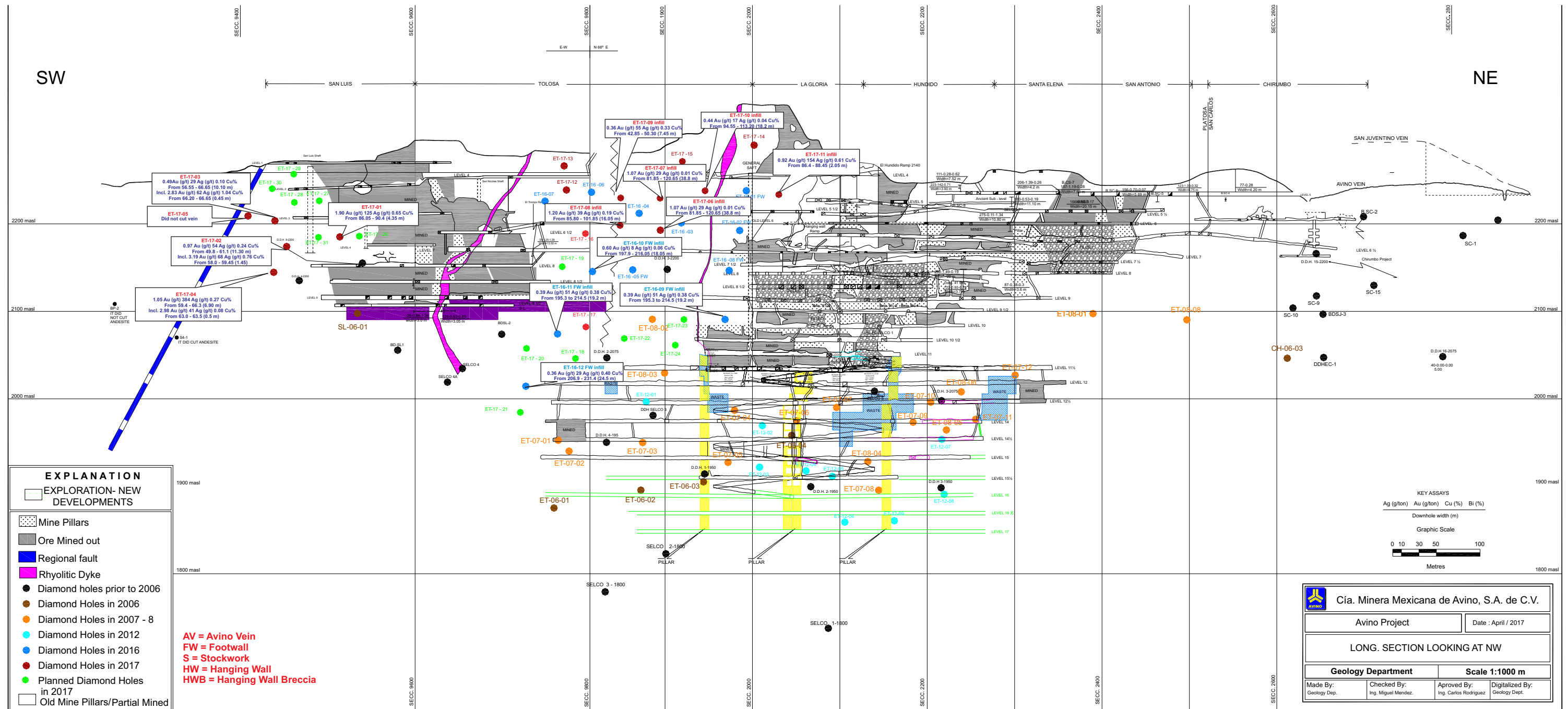




April 25, 2017
 Avino Silver & Gold Mines Announces Further Results From Its Current Exploration Drill Programs
 (Between the San Luis Workings and Elena Tolosa Workings, and to the west of San Luis) at the Avino Mine
 Long Section 1- Full Longitudinal Section



EXPLANATION

- EXPLORATION- NEW DEVELOPMENTS
- Mine Pillars
- Ore Mined out
- Regional fault
- Rhyolitic Dyke
- Diamond holes prior to 2006
- Diamond Holes in 2006
- Diamond Holes in 2007 - 8
- Diamond Holes in 2012
- Diamond Holes in 2016
- Diamond Holes in 2017
- Planned Diamond Holes in 2017
- Old Mine Pillars/Partial Mined

AV = Avino Vein
FW = Footwall
S = Stockwork
HW = Hanging Wall
HWB = Hanging Wall Breccia

KEY ASSAYS

Ag (g/ton)	Au (g/ton)	Cu (%)	SI (%)
------------	------------	--------	--------

Downhole width (m)

Graphic Scale

0 10 30 50 100

Metres

Cia. Minera Mexicana de Avino, S.A. de C.V.	
Avino Project	Date : April / 2017
LONG. SECTION LOOKING AT NW	
Geology Department	Scale 1:1000 m
Made By: Geology Dep.	Checked By: Ing. Miguel Mendez
Approved By: Ing. Carlos Rodriguez	Digitalized By: Geology Dept.